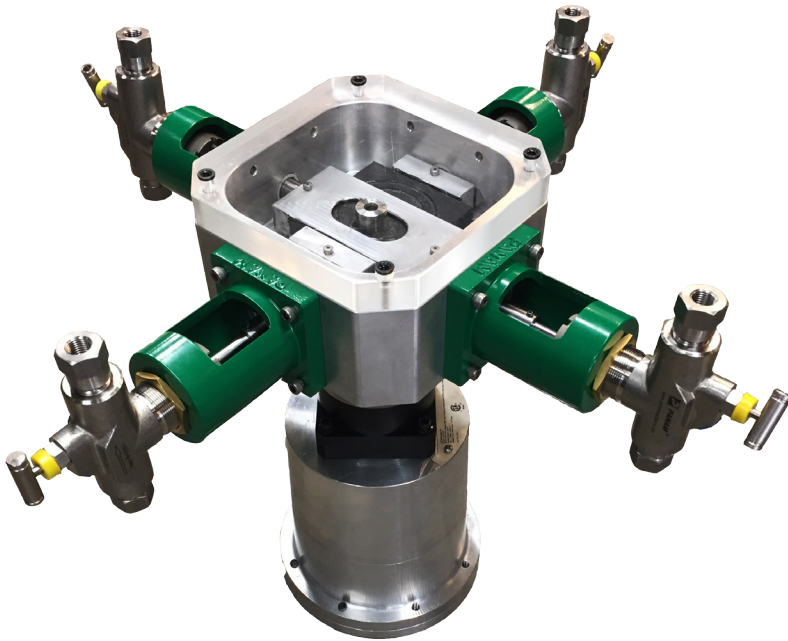


INDRATEL LCO TECHNOLOGIES



Clean Air & Chemical Management Solution



The *CROSSFIRE*

Ultra-Low Power Consumption Chemical Injection Pump
& Instrument Air Compressor

CROSSFIRE

Chemical Injection Pump

Max Volume : 720 L/day
Max Pressure: 10,000 psi
(applications >6000 psi require special parts)

Powerful chemical injection
and control with
Zero Methane Emissions!

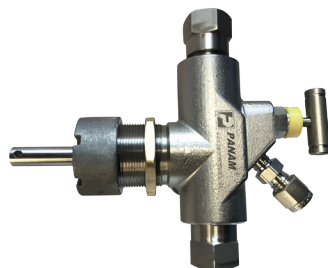


Ultra-Low Power means ...

- Inject 20 L/day into a 500 psi line and draw only 275 mA!
- With two 12V car batteries the CROSSFIRE will continually inject for 3 weeks without needing any recharge.

True Proportionate Chemical Injection means ...

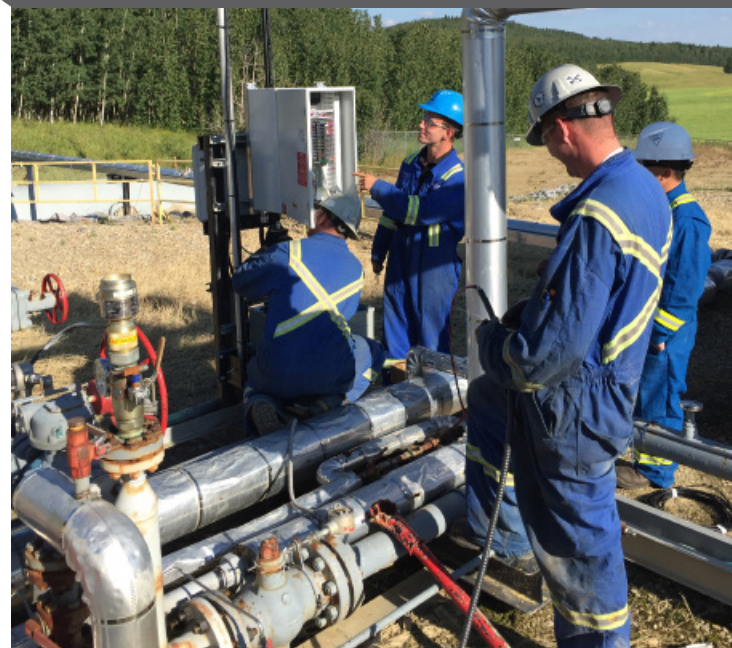
- Goodbye to batch injections or timer relays.
- Adios to over/under injection and the high costs related to wasted chemical.
- Continuous steady injection provides better results from your chemicals
- The CROSSFIRE can adjust speed automatically to inject exactly what you need and nothing more or less.



Non-Proprietary Fluid Ends means ...

- We use standard 5100 series fluid ends.
- Your operators already know how to maintain the pump.
- This product is completely field servicable. Your operators likely already have any needed spare parts in their trucks!

- Extremely efficient for either **grid power** or a **small solar array**.
- Hit your chemical budget and delivery expectations every time.
- Easy to maintain with standard parts.



- **Replace up to 4 pneumatic pumps** with full pressure to all 4 heads.
- Wide and **easy control range** from up/down switches to complete Modbus automation controlled with your smart phone.

CROSSFIRE

Instrument Air Compressor

The CROSSFIRE is a Common Platform that is interchangeable as a chemical injection pump or instrument air compressor.

- Best Class I Div I Instrument Air Compressor on the market at the lowest price.
- Keep all existing low-bleed pneumatic instrumentation, but use clean, dry, air instead of saturated sales gas.
- Drastically reduce maintenance on instruments – no plugging or cleaning instruments from dirty gas.

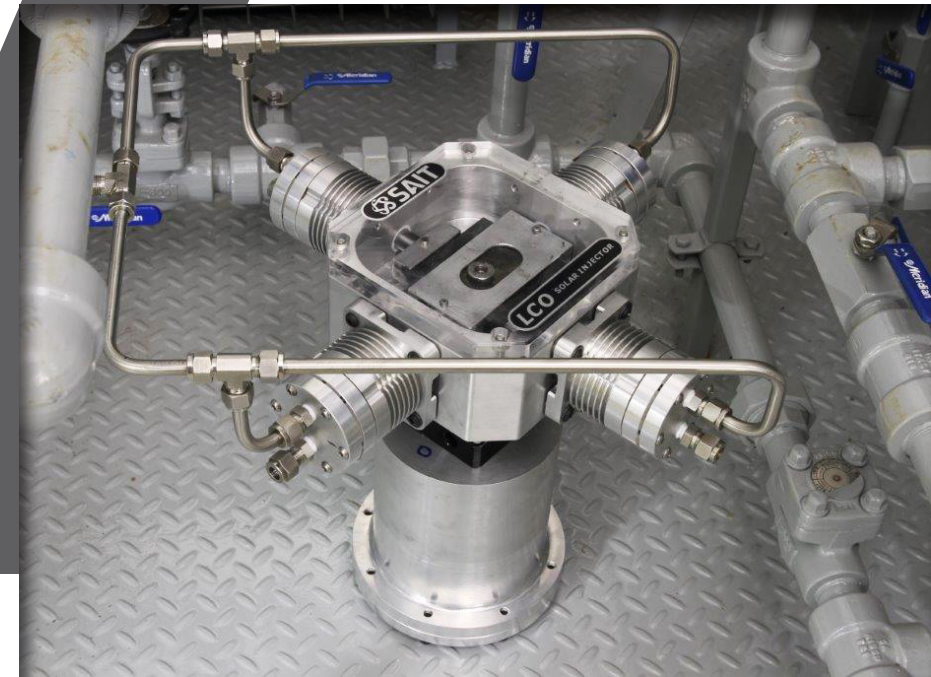


- Stop wasting sales gas!
- Instruments will last much longer when powered by compressed air, and at 1/3 the cost of electronic instruments.

Reduce or
Completely Eliminate
Vented Methane from
Pneumatic
Instrumentation

Ideal for
Panel Purge and
Pressurization
Systems

Produces up to
1,000 scfd at 35 psi
to Power all Low-Bleed
Instrumentation



The **CROSSFIRE Class I Div II Smart Controller** features a high performance 32-bit processor. Compact, light-weight design and DIN rail mountable.

- Simple to use interface: intuitive for operators to control with serial cable or with their smartphones from their trucks via Bluetooth.
- Variable speed and programmable logic control.
- Modbus communication for remote monitoring and control via SCADA.
- Time stamped status & event log saved in non-volatile memory.

Perfect for carbon reduction programs!

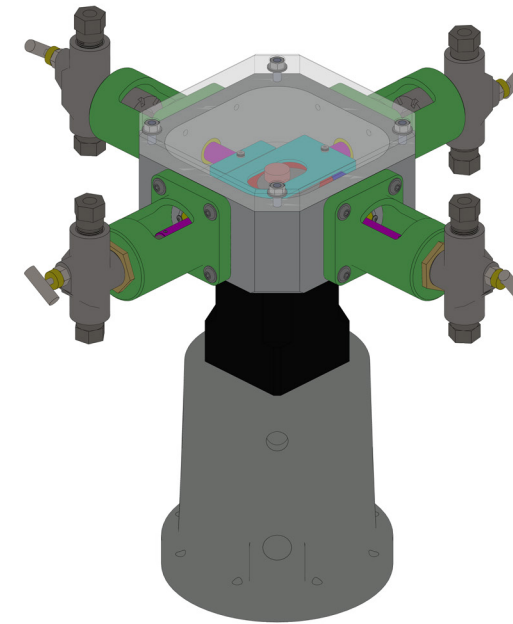
- Extremely durable controller with critical protection schemes built in.

Weather Resistant Controller!



CROSSFIRE Controller Installed in Electrical Panel

The CROSSFIRE is a Complete Environmental Solution for Methane Emissions Without Sacrificing Performance



The CROSSFIRE is an expert-designed technology based on 35 years of industry experience in conjunction with the Southern Alberta Institute of Technology (SAIT), founded in 1916.



Contact Us For Further Information

Info@lcotechnologies.com
1-403-860-9899
www.lcotechnologies.com

115-1829 54 Street SE
Calgary, AB T2B-1N5
CANADA

sales@indratel.com.au
www.indratel.com.au

24 Container Street
Tingalpa, Qld 4173

AUSTRALIA